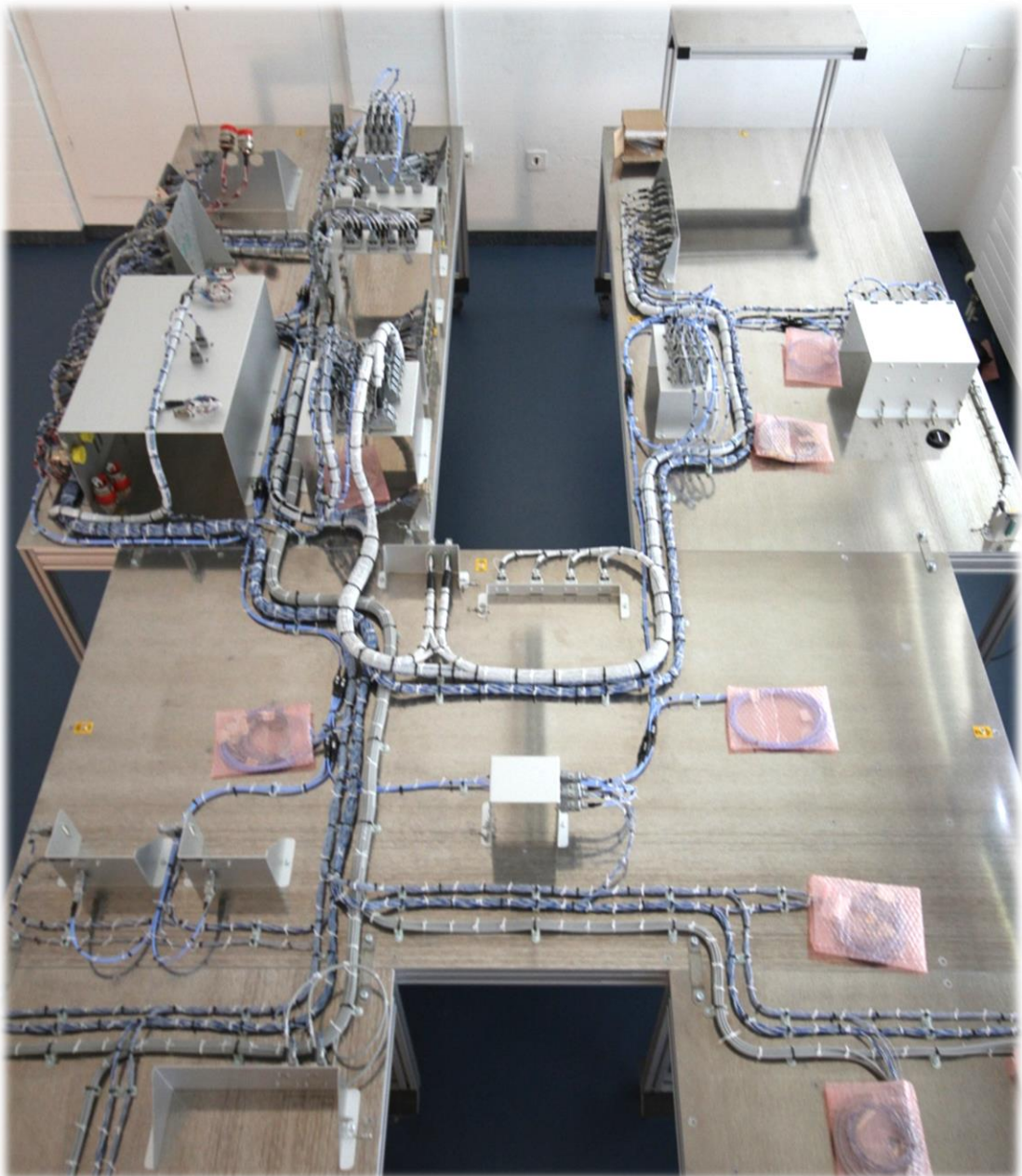


## Electrical / Avionic Test Bench

An Electrical / Avionic Test Bench is aimed to support real time open-loop and close-loop testing of spacecraft subsystems. It provides the facilities to simulate a selection of units / equipment in the case where the real hardware may be unavailable.

It consists in

- Dummy units connector brackets
- Bench ground plates
- Unit adaptor plates
- Electrical harness
- Physical benches



**Function**

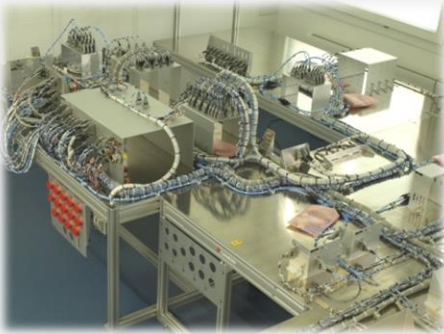
- Physical bench



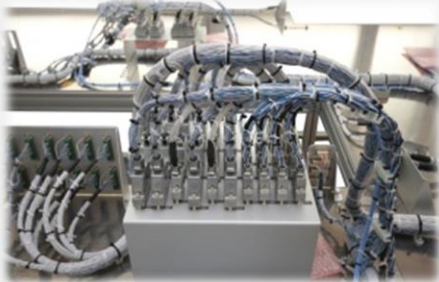
- Bench ground plate



- Unit adaptor plates



- Dummy units connector brackets



**Implementation**

- Aluminium tables fitted with steering wheels and grounding plates
- DSub, MIL-DTL-38999, MIL-STD-1553B, SpW, CAN, Deutsch, ... connectors.
- High temperature (-55°C, +150°C) wires
- Harness bundled with lacing cord

- Electrical harness
  - Power connection of the units
  - Signal connection of the units
  - MIL-STD-1553B bus connection
  - SpaceWire bus connection
  - CAN bus connection



- EGSE interface cables

